

EXISTING PRV KIOSK DECOMMISSIONING NOTES:

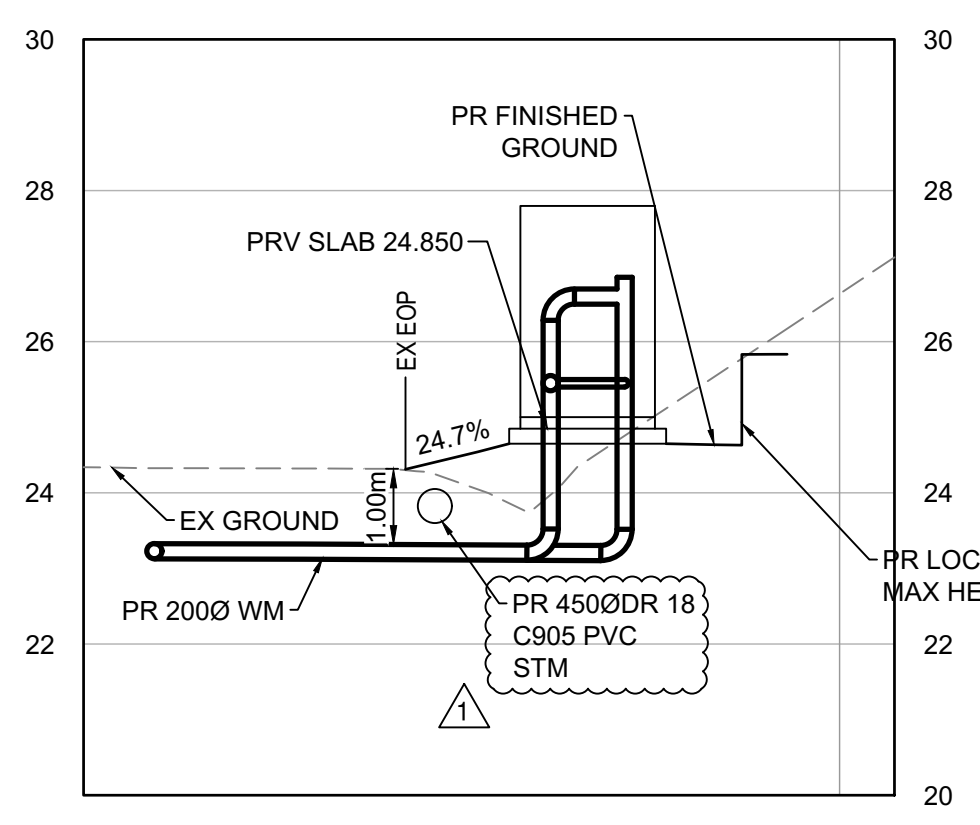
REMOVE AND DISPOSE OF EXISTING KIOSK, REMOVE EXISTING PRV HARDWARE.

REMOVE AND DISPOSE EXISTING CONCRETE PAD. CUT EXISTING INLET AND OUTLET PIPE 0.3m BELOW FINISHED GRADE AND CAP PIPE ENDS WITH CONCRETE PLUG MIN. 500mm INTO PIPE ENDS. FILL FLUSH TO SURFACE WITH 100MM TOPSOIL AND SEED.

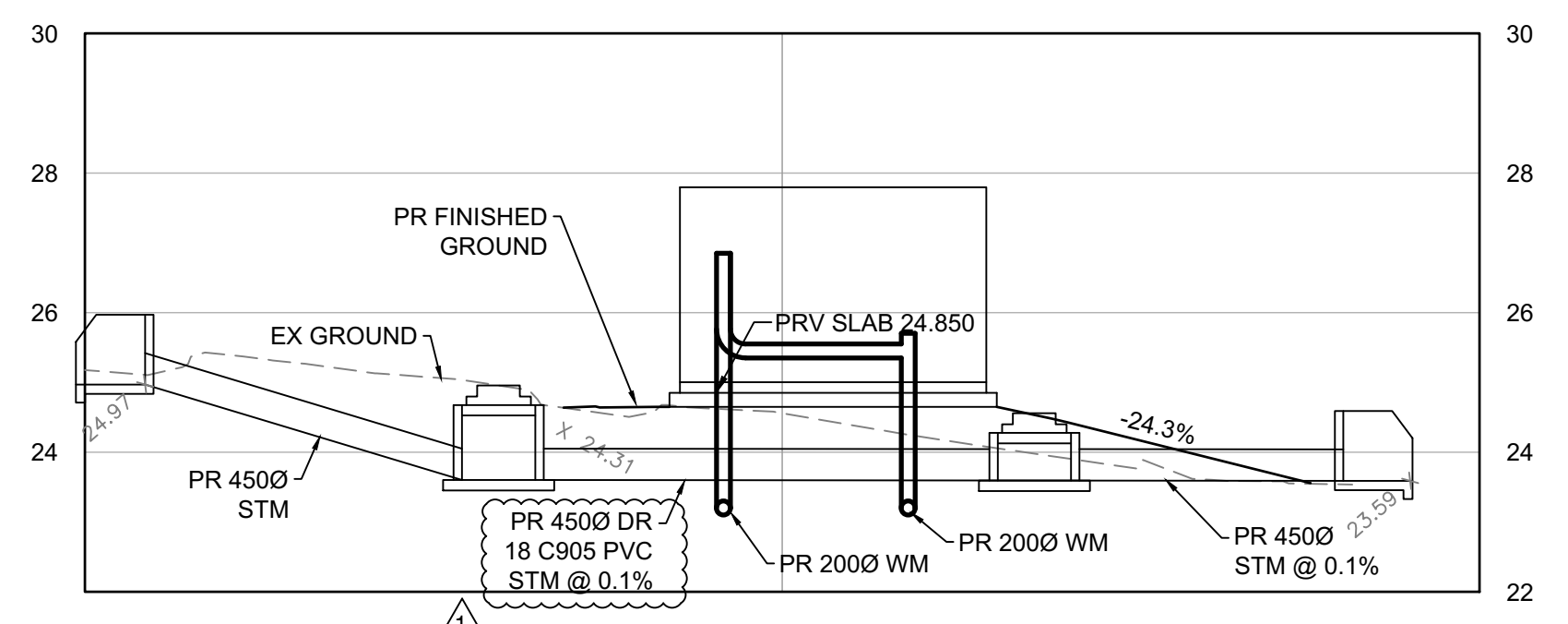
EXISTING PRV HARDWARE TO BE DELIVERED TO VILLAGE PUBLIC WORKS YARD.

EXISTING UTILITIES SHOWN ARE BASED UPON AVAILABLE RECORD DRAWINGS AND MAY NOT BE COMPLETE OR ACCURATE. THE CONTRACTOR REMAINS RESPONSIBLE FOR THE FIELD LOCATION OF ALL UTILITIES PRIOR TO CONSTRUCTION AND FOR THEIR PROTECTION DURING CONSTRUCTION. THE CONTRACTOR SHALL ARRANGE FOR FIELD LOCATES OF EXISTING UTILITIES. CONFIRM LOCATION AND ELEVATIONS PRIOR TO CONSTRUCTION AND COORDINATE WITH THE CONTRACT ADMINISTRATOR AS REQUIRED TO ACCOMMODATE THE WATERMAIN INSTALLATION.

BAYVIEW ROAD SCHOOL PRV SITE PLAN
Scale: 1:100



PRV SECTION A-A
Scale: 1:100



PRV SECTION B-B
Scale: 1:100

LEGEND

- ASPHALT
- GRAVEL ROAD SURFACE
- CUT SLOPE (1.5H:1V MAX)

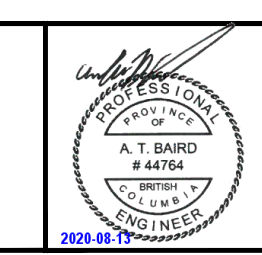
ADDENDUM #2, ATTACHMENT #1
ISSUED FOR TENDER DESIGN NO.

32610

REV NO	REVISIONS	DATE	DRAWN	APPRD
0	ISSUED FOR TENDER	JULY/20/20	ATB	ATB
1	ISSUED FOR TENDER ADDENDUM #2	AUG/12/20	ATB	ATB



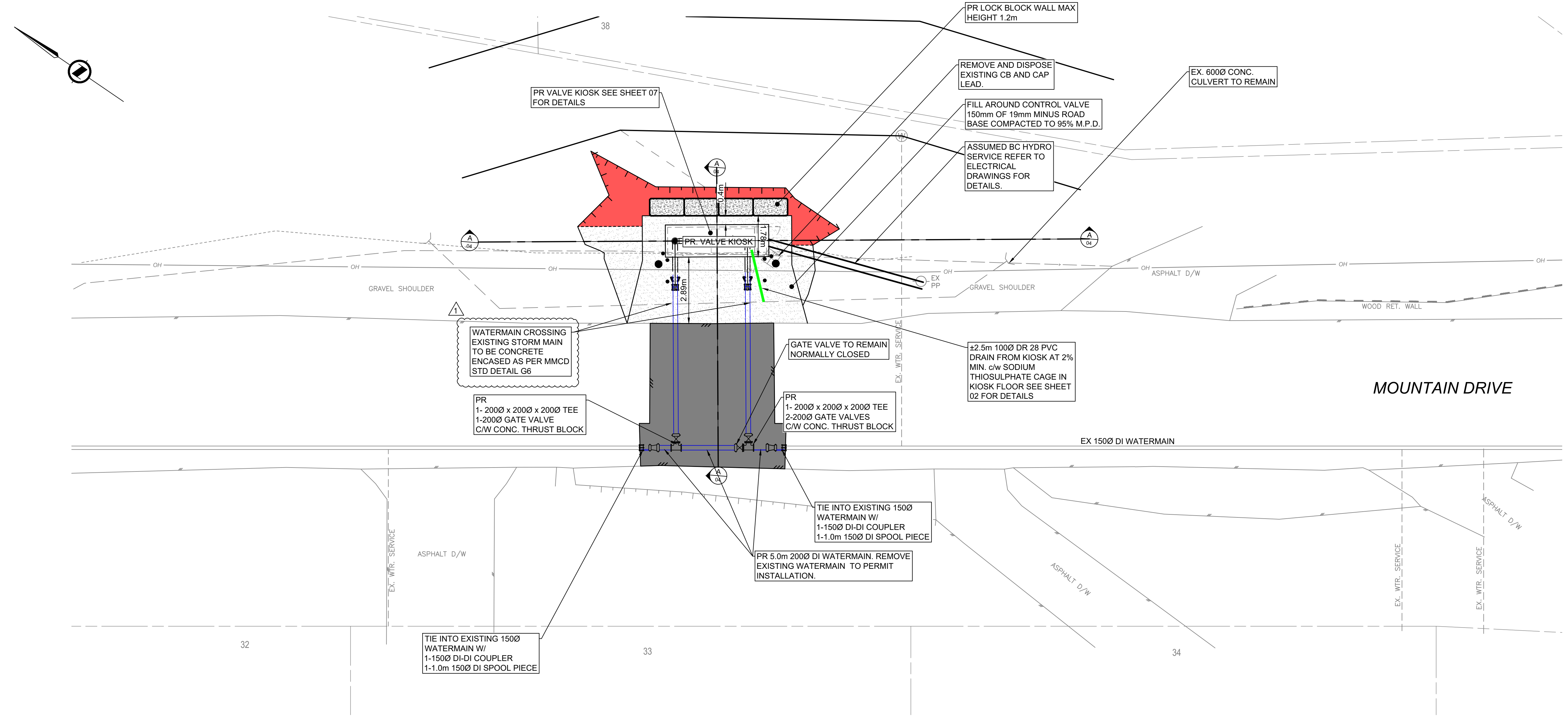
BAYVIEW ROAD
PRV SITE PLAN



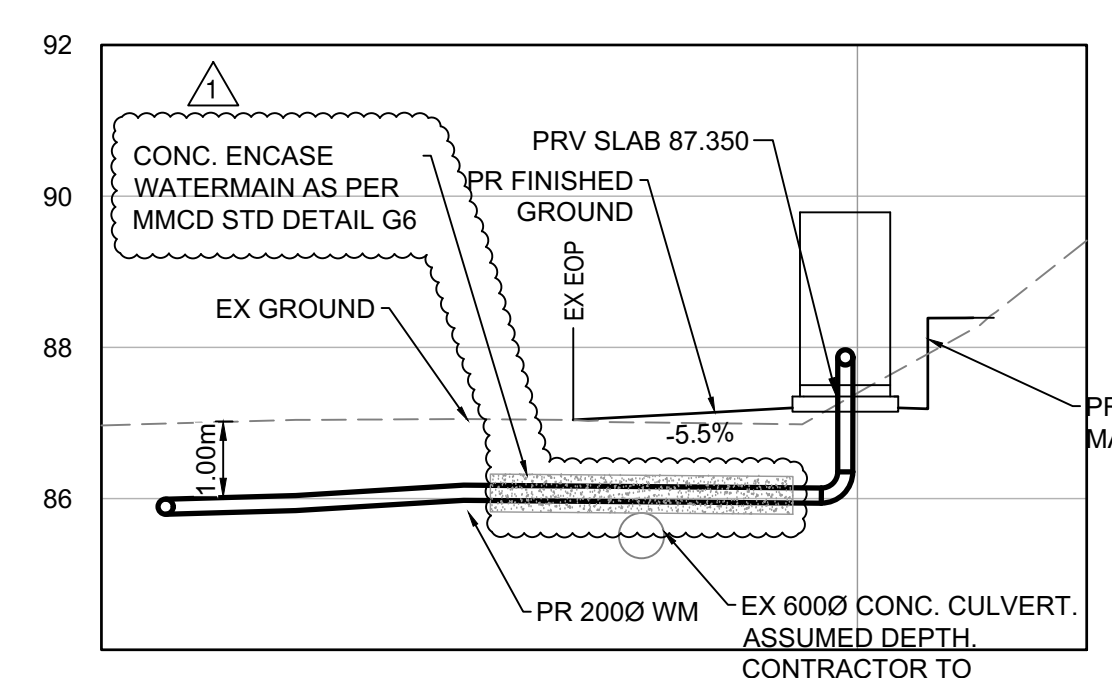
#503, 4190 Loughheed Highway, Burnaby, BC V5C 6A8
T: (604)629-2696 F: (604)629-2698

SCALE	AS SHOWN	DATE	MAR. 27, 2020	DWG. NO.
DRAWN BY	ATB	DESIGN BY	ATB	03 OF 13
CHECKED BY	MG	APPROVED BY	ATB	REV. 1

EXISTING UTILITIES SHOWN ARE BASED UPON AVAILABLE RECORD DRAWINGS AND MAY NOT BE COMPLETE OR ACCURATE. THE CONTRACTOR REMAINS RESPONSIBLE FOR THE FIELD LOCATION OF ALL UTILITIES PRIOR TO CONSTRUCTION AND FOR THEIR PROTECTION DURING CONSTRUCTION. THE CONTRACTOR SHALL ARRANGE FOR FIELD LOCATES OF EXISTING UTILITIES, CONFIRM LOCATION AND ELEVATIONS PRIOR TO CONSTRUCTION AND COORDINATE WITH THE CONTRACT ADMINISTRATOR AS REQUIRED TO ACCOMMODATE THE WATERMAIN INSTALLATION.

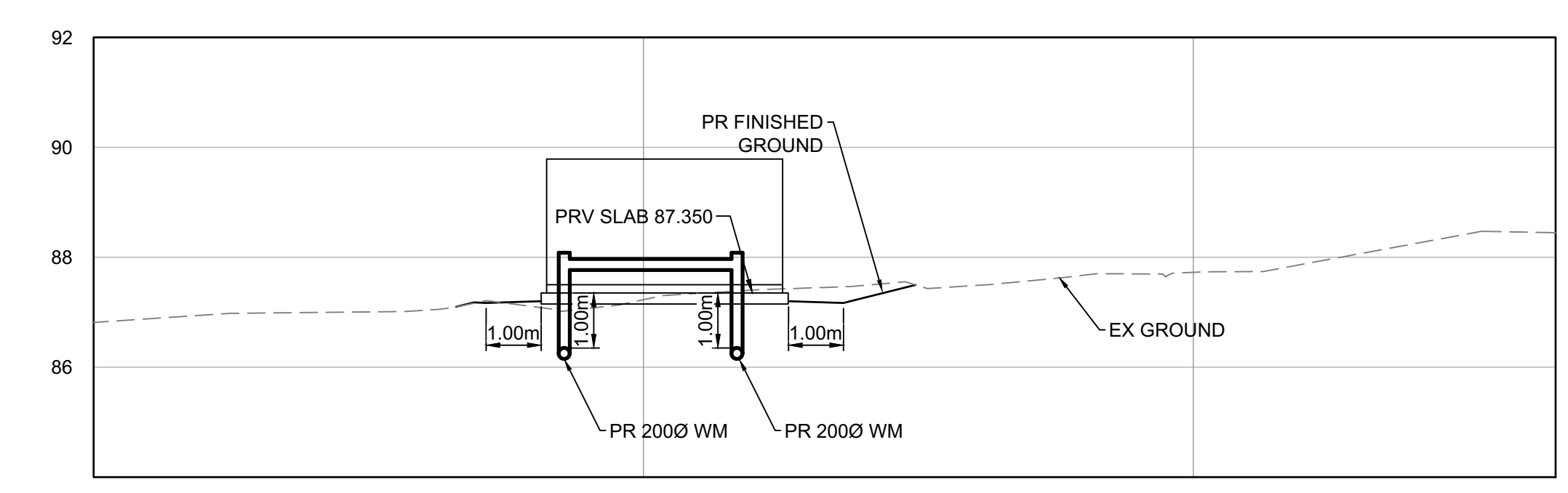


MOUNTAIN DRIVE CONTROL VALVE SITE PLAN
Scale: 1:100



PRV SECTION A-A
Scale: 1:100

CONTRACTOR TO CONFIRM DEPTH PRIOR TO CONSTRUCTION AND NOTIFY THE CONTRACT ADMINISTRATOR OF ANY CONFLICTS. PROVIDE 0.15m CLEARANCE BETWEEN WIM AND CULVERT.



PRV SECTION B-B
Scale: 1:100

LEGEND

- ASPHALT
- GRAVEL ROAD SURFACE
- CUT SLOPE (1.5H:1V MAX)

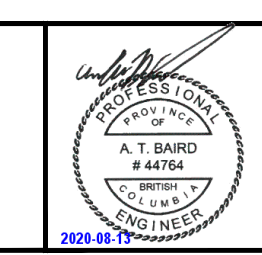
ADDENDUM #2, ATTACHMENT #1
ISSUED FOR TENDER

DESIGN NO. **32610**

REV NO	REVISIONS	DATE	DRAWN	APPRD
0	ISSUED FOR TENDER	JULY/20/20	ATB	ATB
1	ISSUED FOR TENDER ADDENDUM #2	AUG/12/20	ATB	ATB



**MOUNTAIN DRIVE
CONTROL VALVE SITE PLAN**



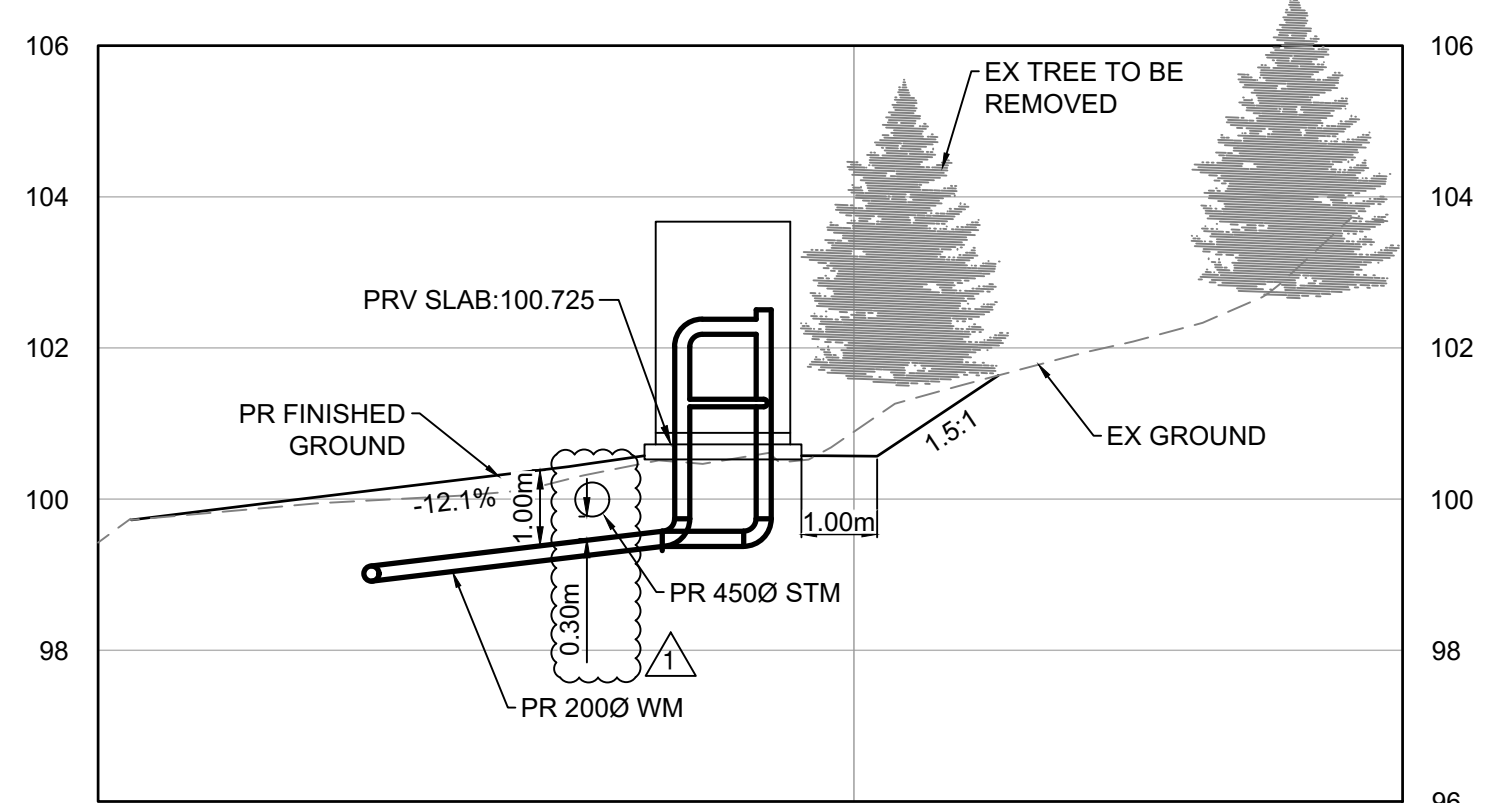
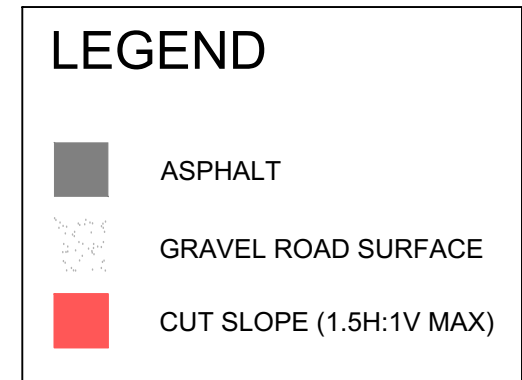
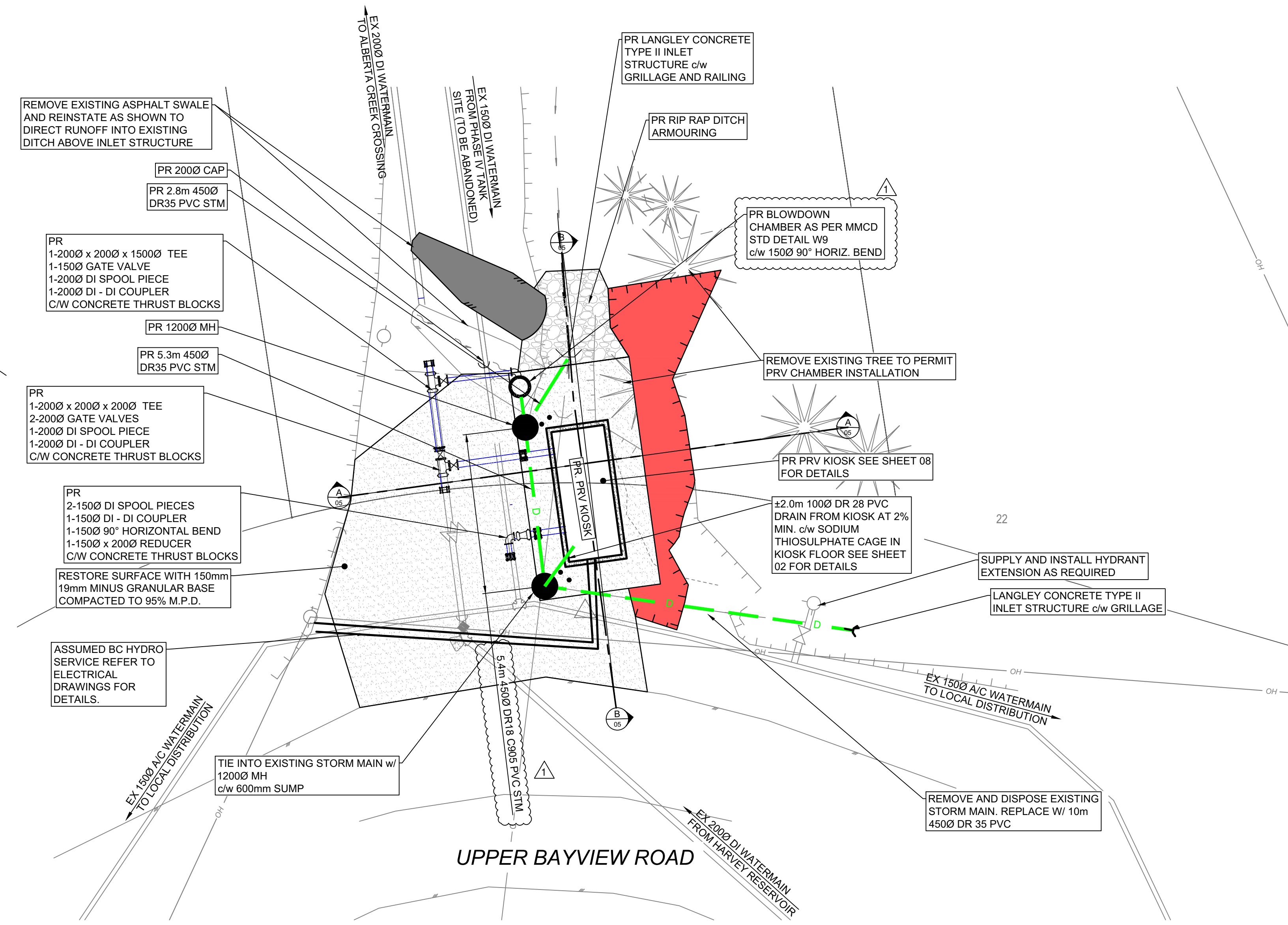
#503, 4190 Loughheed Highway, Burnaby, BC V5C 6A8
T: (604)629-2696 F: (604)629-2698

SCALE	AS SHOWN	DATE	MAR. 27, 2020	DWG. NO.
DRAWN BY	ATB	DESIGN BY	ATB	04 OF 13
CHECKED BY	MG	APPROVED BY	ATB	
				REV. 1

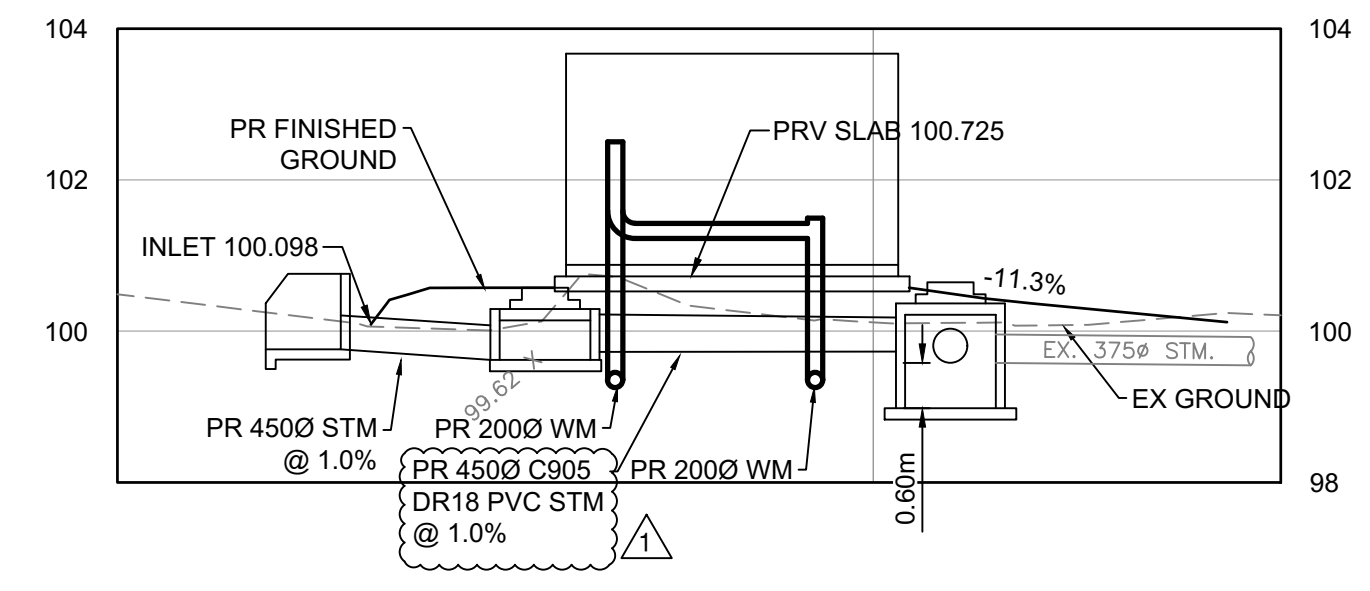
DESTROY ALL PRINTS BEARING PREVIOUS NO.

File: G:\Projects\32610\32610_LIO_Lions_Bay_PRV\02_CADD\02_Drafting\02_Production_Sheets\32610_SITE_PLANS.dwg | PLOT DATE: 2020/08/12

EXISTING UTILITIES SHOWN ARE BASED UPON AVAILABLE RECORD DRAWINGS AND MAY NOT BE COMPLETE OR ACCURATE. THE CONTRACTOR REMAINS RESPONSIBLE FOR THE FIELD LOCATION OF ALL UTILITIES PRIOR TO CONSTRUCTION AND FOR THEIR PROTECTION DURING CONSTRUCTION. THE CONTRACTOR SHALL ARRANGE FOR FIELD LOCATES OF EXISTING UTILITIES, CONFIRM LOCATION AND ELEVATIONS PRIOR TO CONSTRUCTION AND COORDINATE WITH THE CONTRACT ADMINISTRATOR AS REQUIRED TO ACCOMMODATE THE WATERMAIN INSTALLATION.



PRV SECTION A-A
Scale: 1:250



PRV SECTION B-B
Scale: 1:250

ADDENDUM #2, ATTACHMENT #1
ISSUED FOR TENDER DESIGN NO.

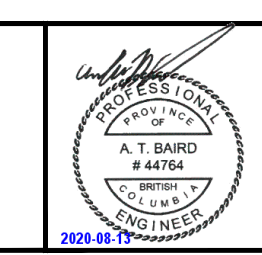
32610

File: G:\Projects\32610\32610_LIO_Lions_Bay_PRV\02_CADD\3D_Drafting\02_Production_Sheets\32610_SITE_PLANS.dwg | PLOT DATE: 2020/08/12

REV NO	REVISIONS	DATE	DRAWN	APPRD
0	ISSUED FOR TENDER	JULY/20/20	ATB	ATB
1	ISSUED FOR TENDER ADDENDUM #2	AUG/12/20	ATB	ATB



UPPER BAYVIEW ROAD
PRV SITE PLAN



SCALE	AS SHOWN	DATE	MAR. 27, 2020	DWG. NO.
DRAWN BY	ATB	DESIGN BY	ATB	05 OF 13
CHECKED BY	MG	APPROVED BY	ATB	REV. 1

DESTROY ALL PRINTS BEARING PREVIOUS NO.