

Village of Lions Bay
Harvey Tank Replacement Project

September 27, 2018

ADDENDUM # 1

This Addendum forms part of the Contract Documents and is to be read, interpreted and coordinated with all other parts. The cost of all work contained herein shall be included in the Contract Sum. The following revisions supersede the information contained in the original drawings and specifications issued for the above named project to the extent referenced and shall become part thereof.

Contract Documents

DRAWINGS

Note that NOT all changes have been clouded in the drawings identified below. It is the responsibility of the Contractor to review the drawings in full.

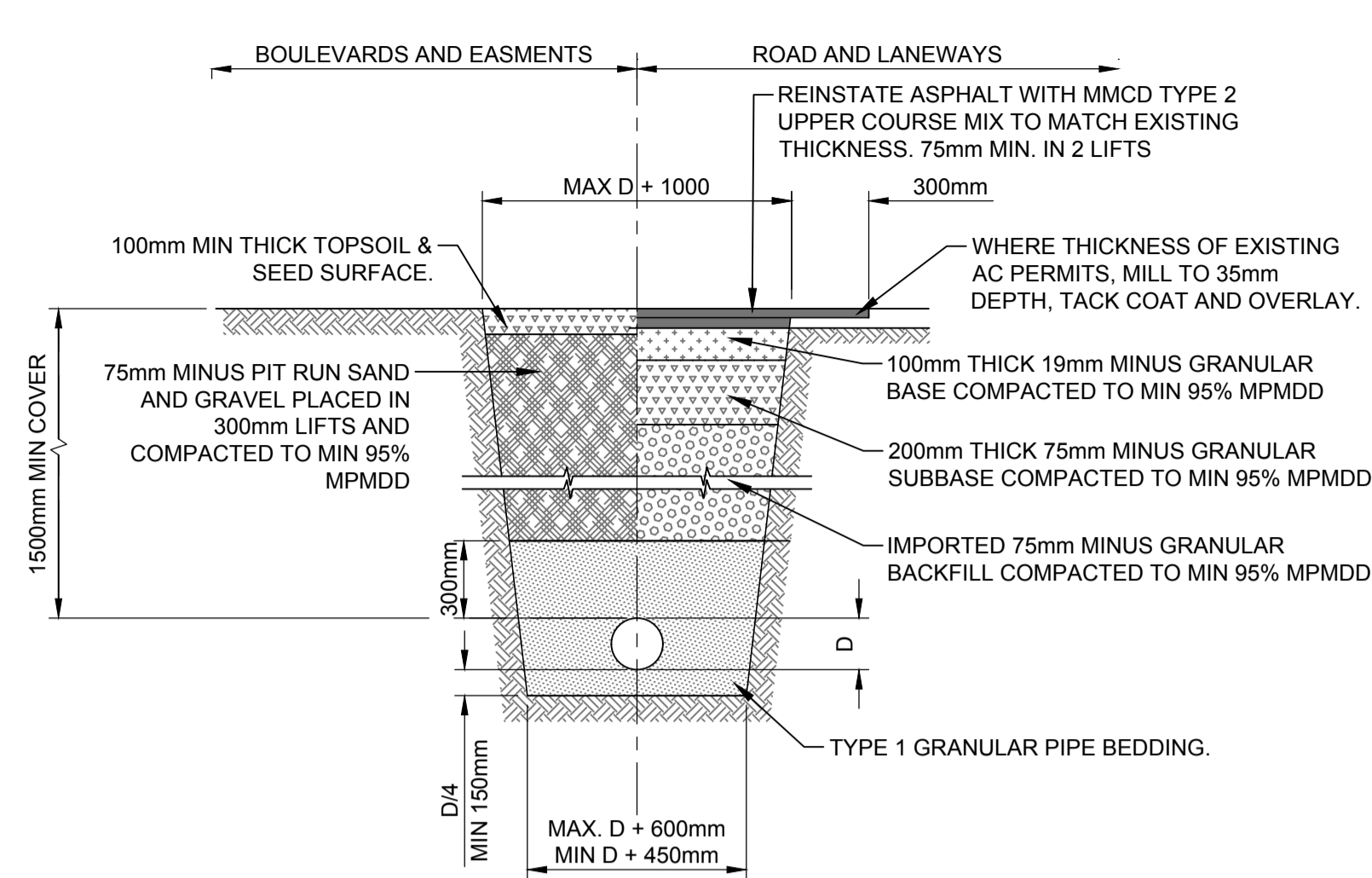
1. Drawing C-01-104

DELETE drawing in its entirety and REPLACE with drawing C-01-104 REV 1 Issued for Addendum 1

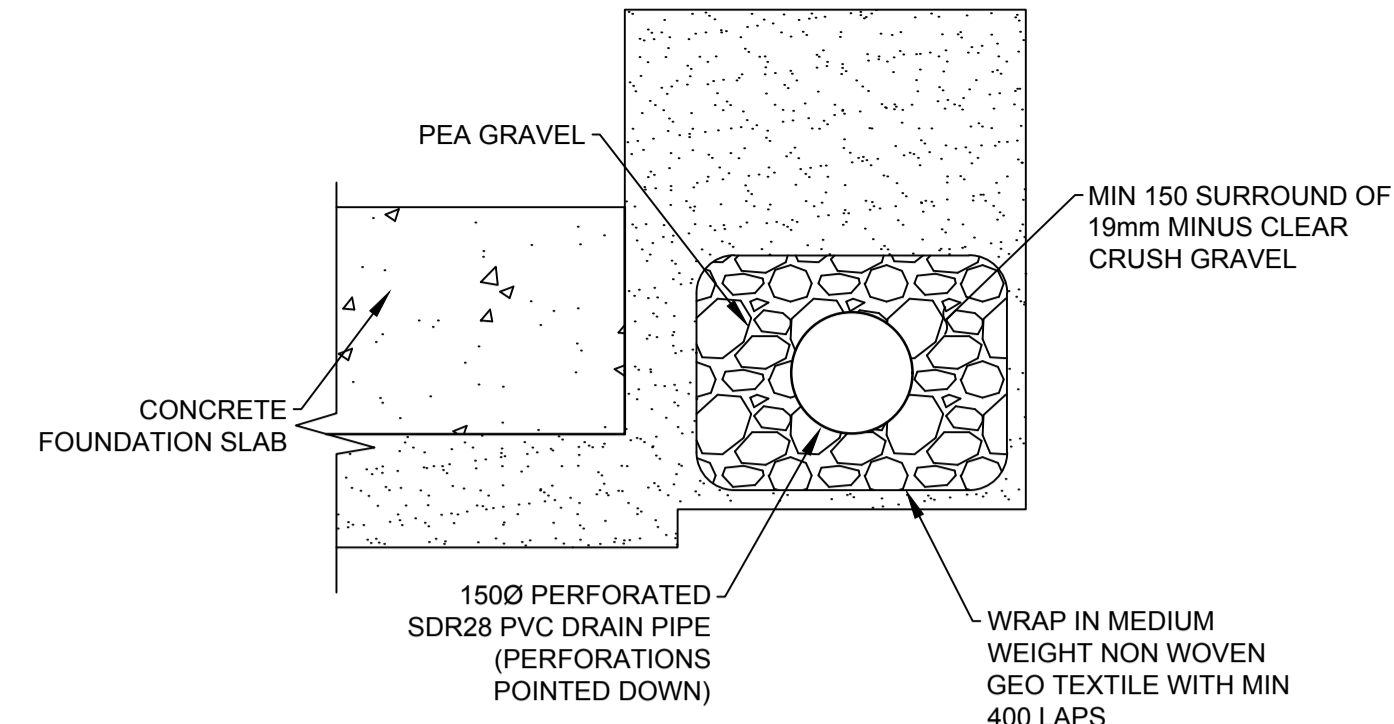
2. Drawing C-01-105

DELETE drawing in its entirety and REPLACE with drawing C-01-105 REV 1 Issued for Addendum 1.

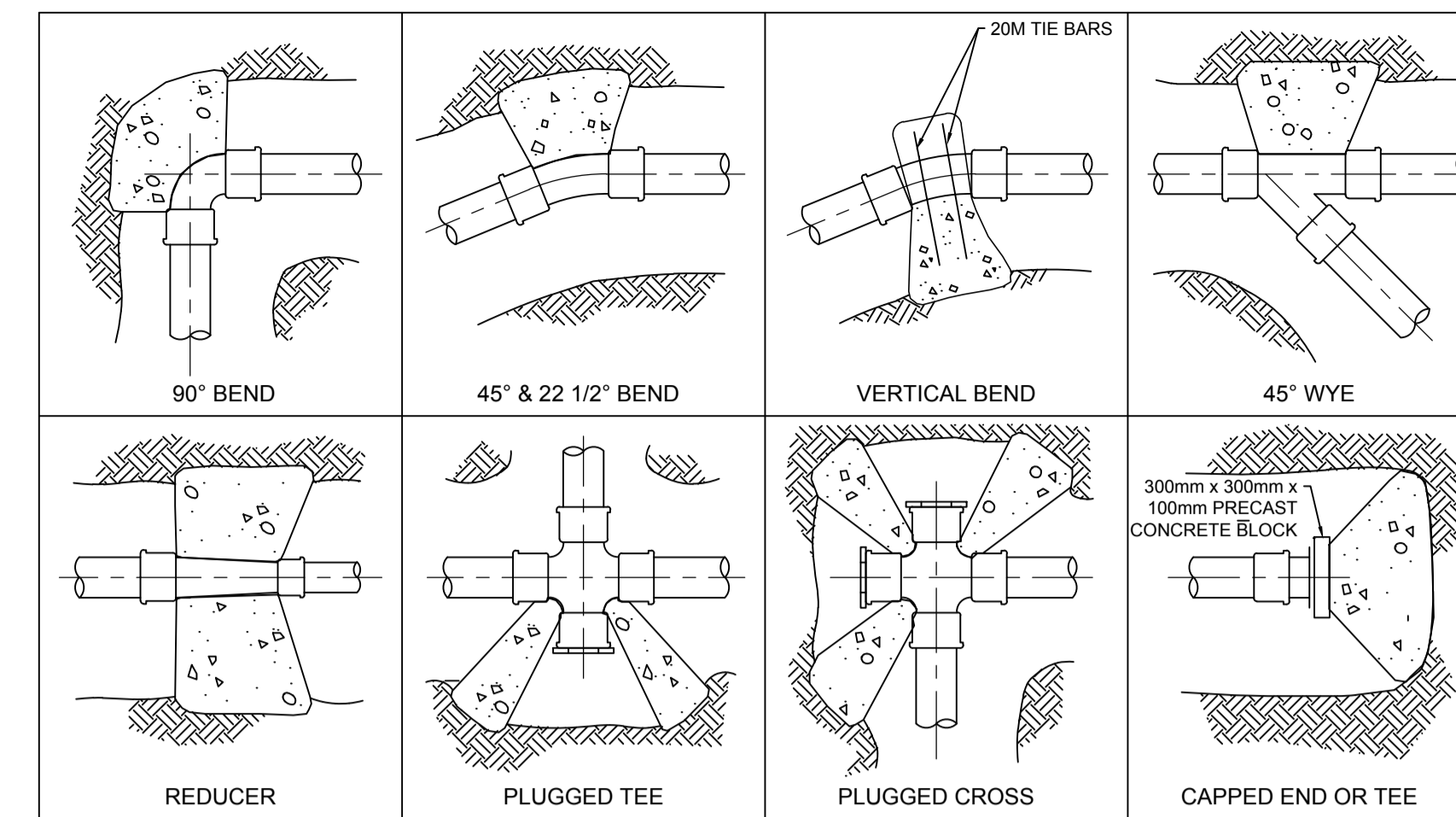
End of Addendum #1



TYPICAL TRENCH DETAIL
 Scale: 1:25



HARVEY - PERFORATED PERIMETER DRAIN DETAIL
 Scale: N.T.S

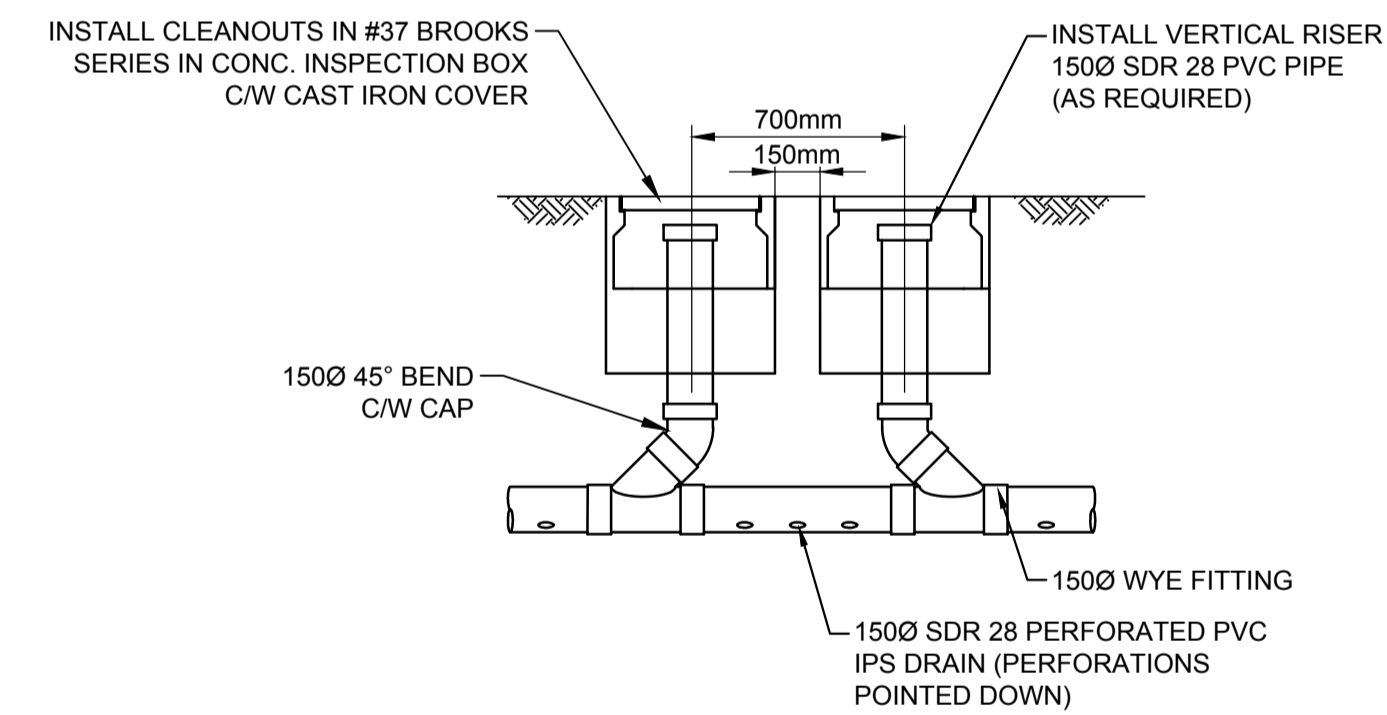


MIN. THRUST AREA BASED ON WATER PRESSURE OF 1380 KPa AND SOIL BEARING CAPACITY OF 50 KPa

FITTING	PIPE DIAMETER IN MILLIMETRES	MIN. THRUST AREA IN SQ. METRES	FITTING	PIPE DIAMETER IN MILLIMETRES	MIN. THRUST AREA IN SQ. METRES
90° BEND	100	0.4	22 1/2° BEND	100	0.2
	150	0.8		150	0.4
	200	1.4		200	0.6
	250	2.2		250	1.0
	300	3.2		300	1.0
45° BEND OR WYE	100	0.4	CAPPED END OR TEE	100	0.4
	150	0.6		150	0.6
	200	0.8		200	1.0
	250	1.2		250	1.6
	300	1.8		300	2.2

- NOTE:
- VALUES GIVEN IN TABLE ARE BASED ON A SOIL BEARING CAPACITY OF 50KPa. FOR SOFT CLAY AND SATURATED SAND-CLAY SOILS IN AN UNDISTURBED STATE.
 - FOR FIRM DRY CLAY OR COMPACT SAND OR GRAVEL, DIVIDE THRUST AREAS BY 2.0
 - FOR CROSSES USE 45° BEND VALUE IN EACH QUADRANT.
 - WHERE PIPE SIZE DIFFERS IN ANY ONE FITTING, USE THE VALUE FOR THE MAX. SIZE.
 - THRUST BLOCKS OF 15 MPa CONCRETE.
 - THRUST BLOCK CONCRETE SHALL NOT ENCRUCH ON THE PIPE, BUT SHALL BEAR ON THE FITTING ONLY.
 - FOR VOLUME OF ANCHOR BLOCKS FOR THE VERTICAL BEND, REFER TO PIPELINE DRAWINGS. USE 2-20m BAR PER m3 CONCRETE.

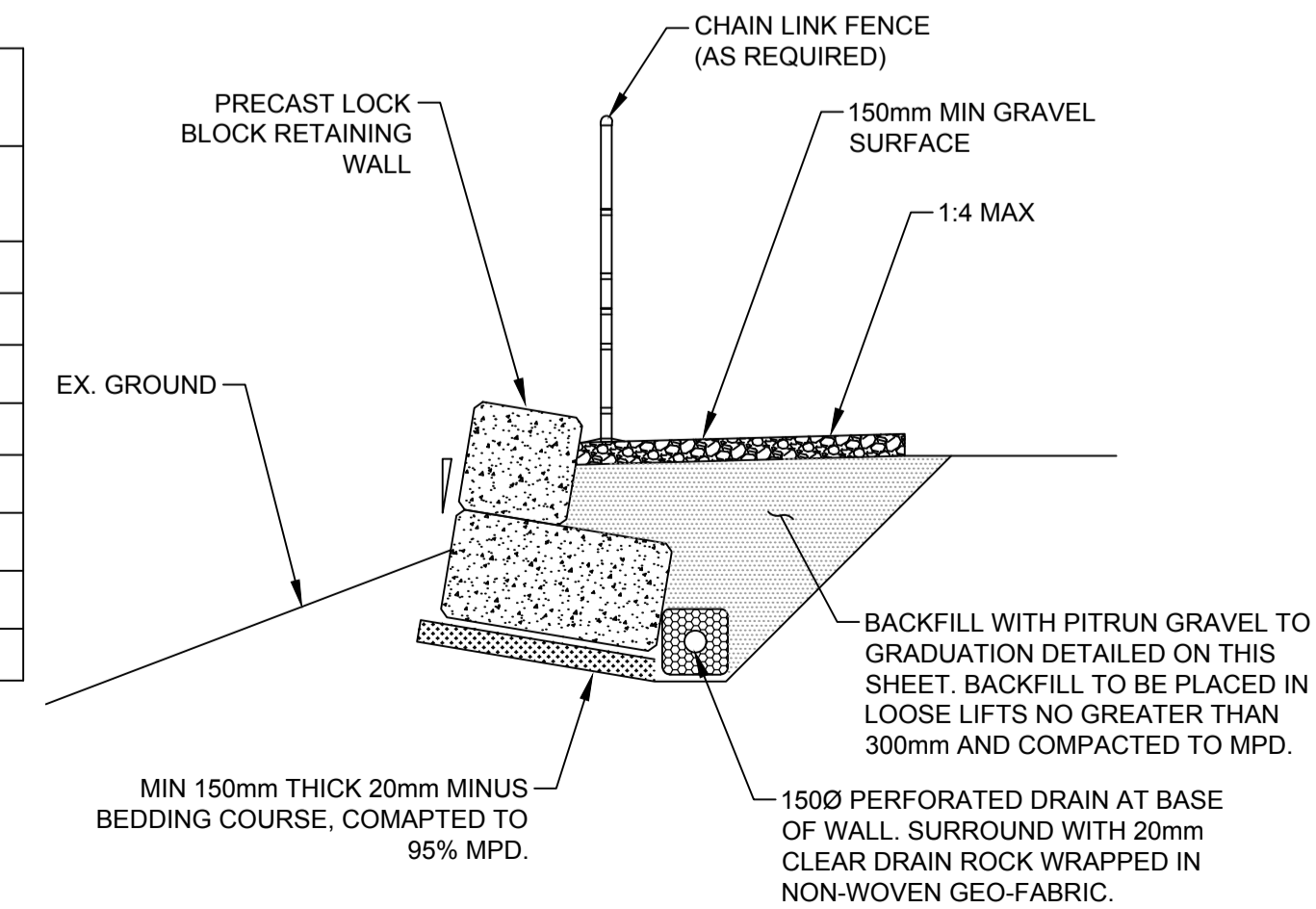
THRUST BLOCK DETAILS
 Scale: N.T.S



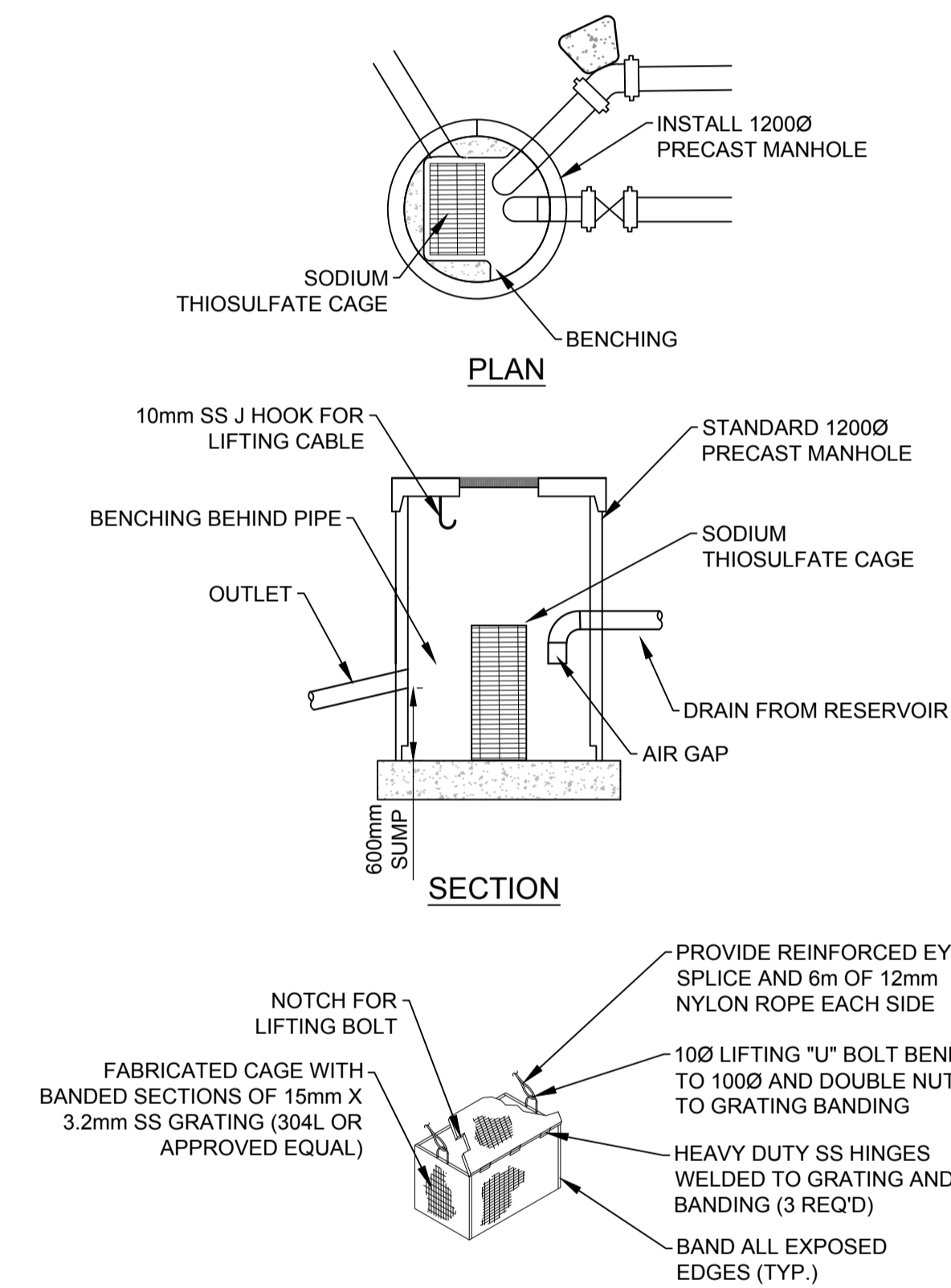
HARVEY TANK CLEANOUT DRAIN DETAIL
 Scale: 1:25

RETAINING WALL BACKFILL GRADATION

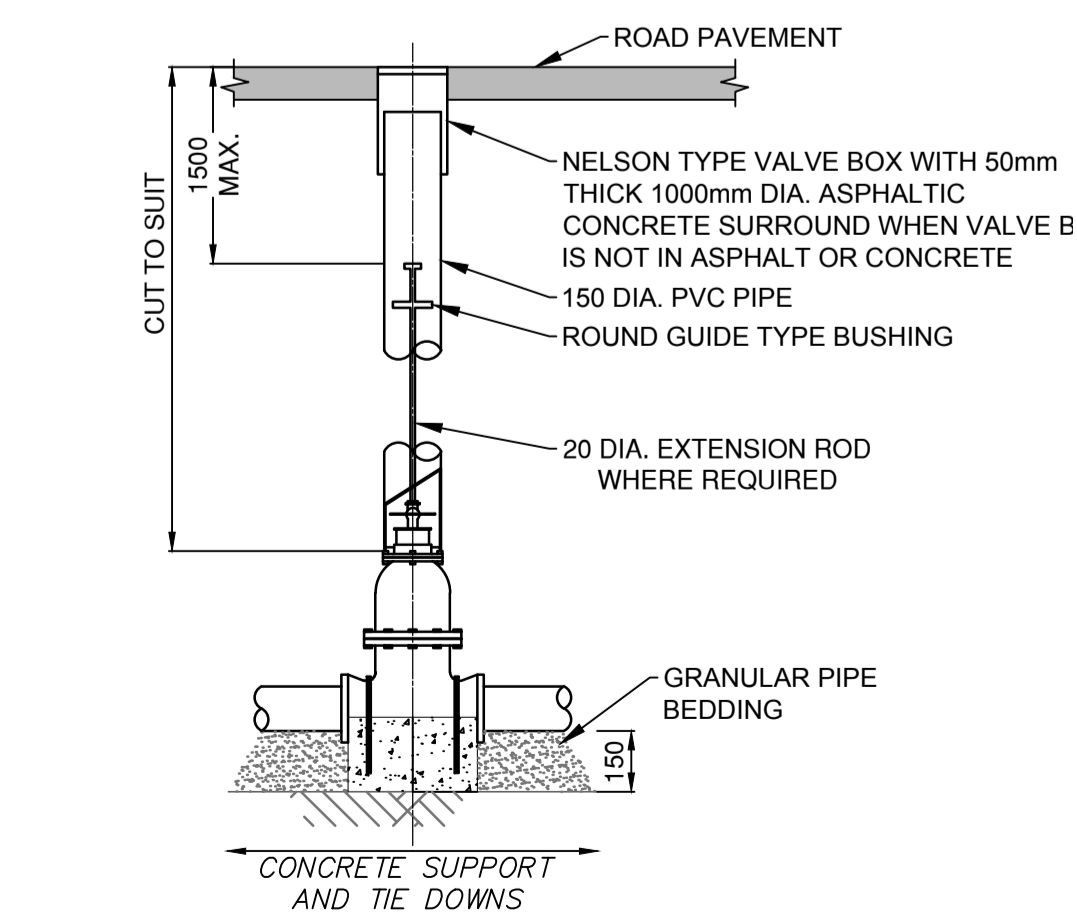
SIEVE SIZE (mm)	PERCENT PASSING
25	100
9.5	60-100
4.75 #4	40-100
2.36 #8	20-80
1.18 #16	0-65
0.3 #50	0-30
0.15 #100	0-10
0.075 #200	0-5



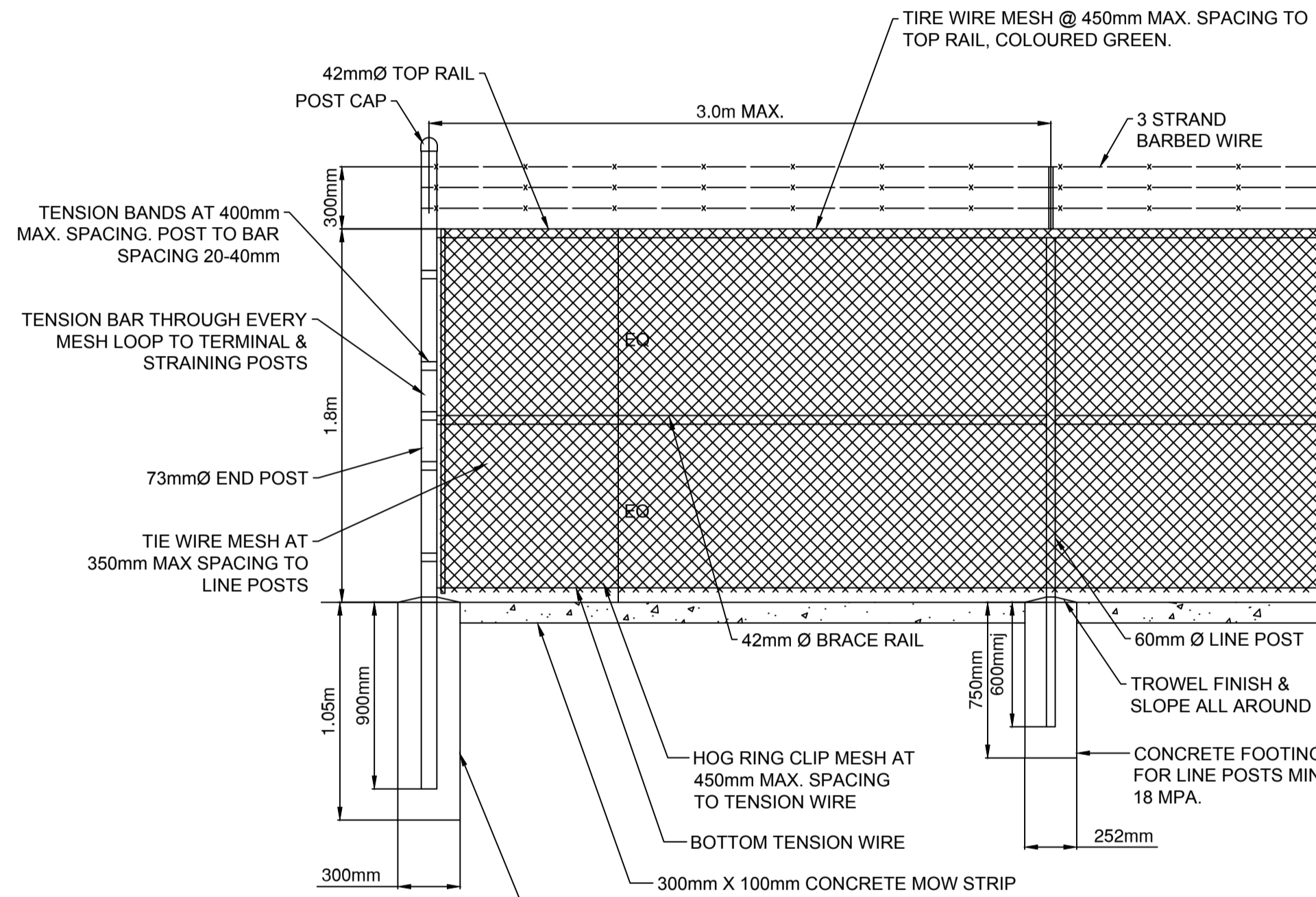
LOCK BLOCK WALL DETAIL
 Scale: 1:50



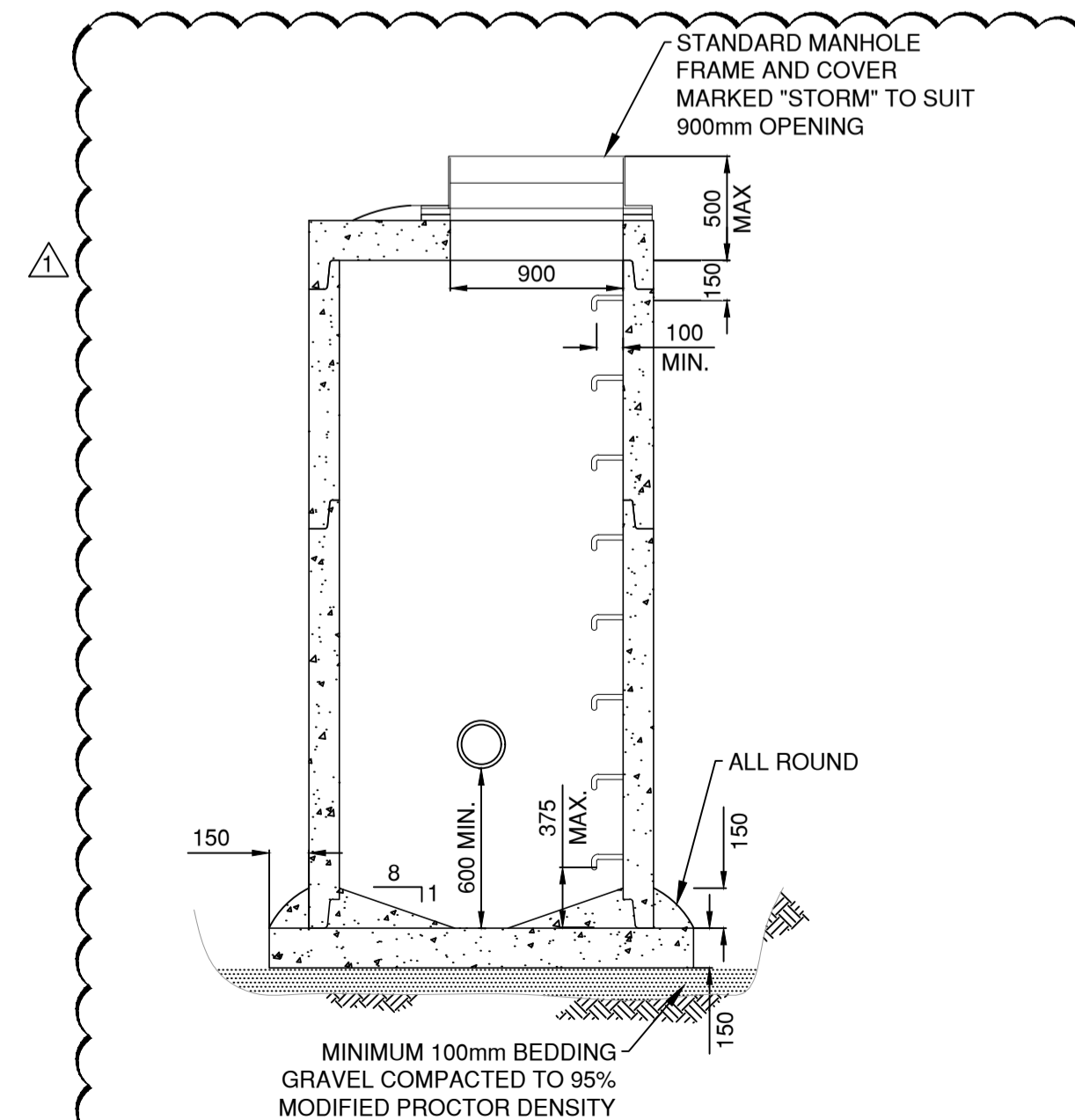
DECHLORINATION MANHOLE DETAILS
 Scale: N.T.S



GATE VALVE BOX DETAIL
 Scale: N.T.S



HARVEY SITE FENCE DETAIL
 Scale: 1:25



MANHOLE WITH SUMP DETAIL
 Scale: N.T.S



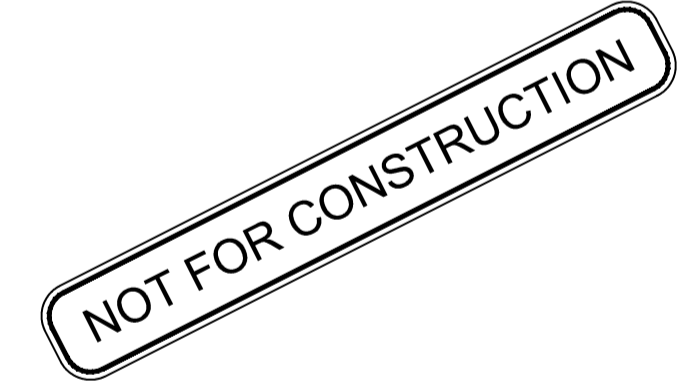
NOTICE:
 THE EXISTENCE, LOCATION AND ELEVATION OF UTILITIES AND/OR CONCEALED STRUCTURES AT THE PROJECT SITE ARE NOT GUARANTEED BY AECOM CANADA LTD.
 THE CONTRACTOR IS RESPONSIBLE FOR DETERMINING THE EXISTENCE, LOCATION AND ELEVATION OF ALL SUCH UTILITIES AND/OR STRUCTURES AND IS RESPONSIBLE FOR NOTIFYING THE APPROPRIATE COMPANY, DEPARTMENT OR PERSON(S) OF ITS INTENTION TO CARRY OUT ITS OPERATIONS.

REGISTRATION

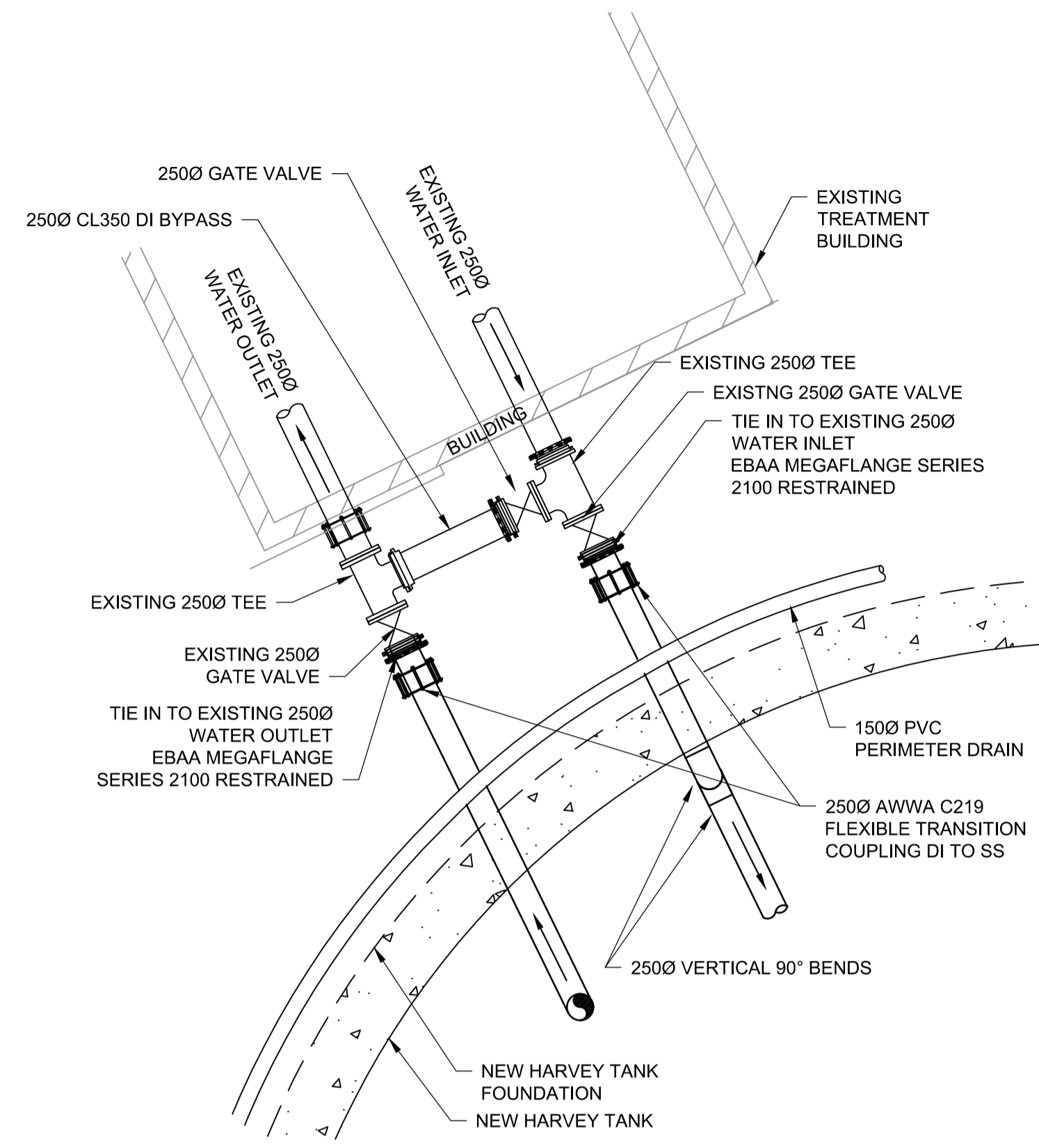
ISSUE/REVISION

NO	DATE	DESCRIPTION
0	09/21/2018	ISSUED FOR TENDER
1	09-27-2018	ISSUED FOR ADDENDUM 1

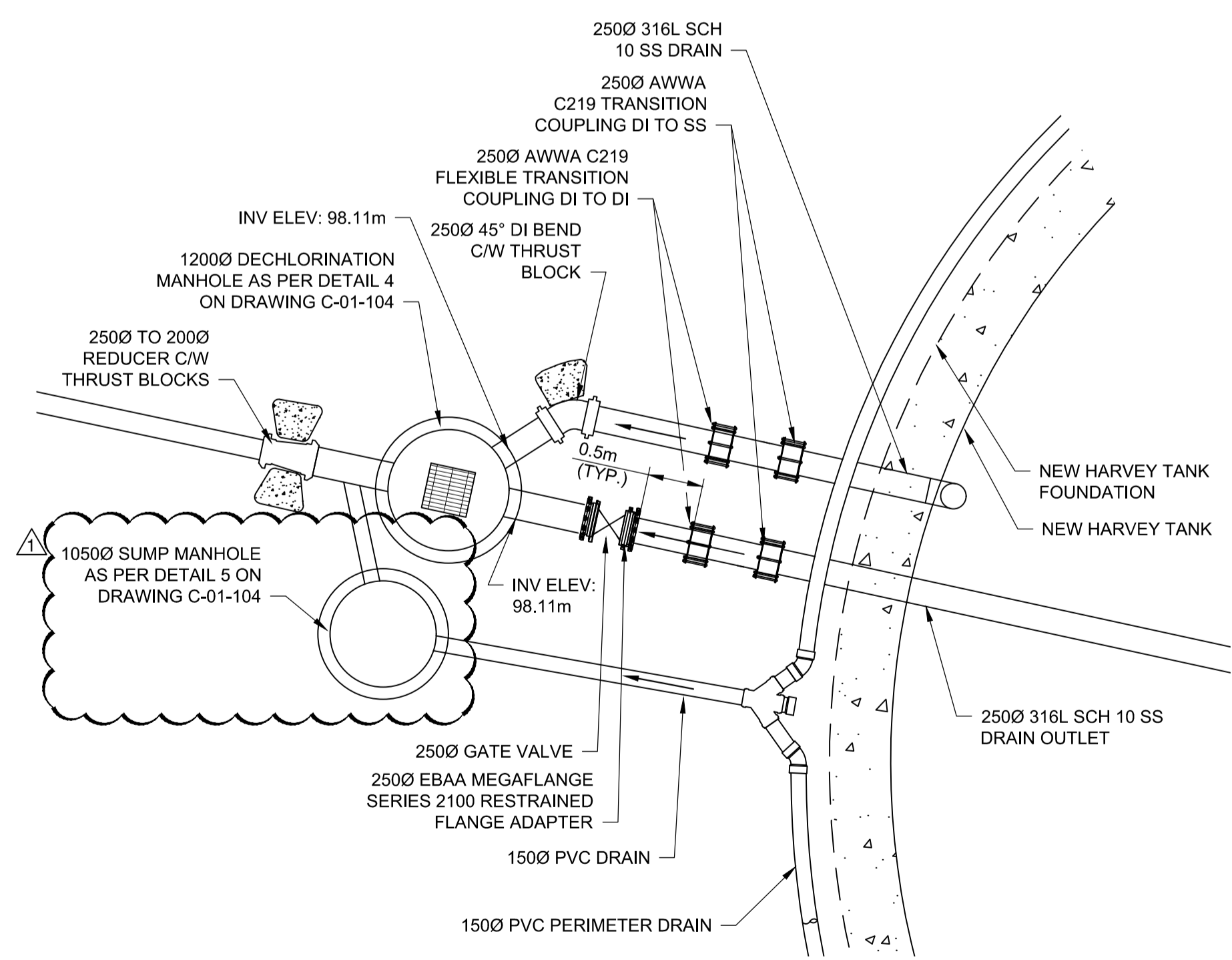
KEY PLAN



This drawing has been prepared for the use of AECOM's client and may not be used, reproduced or relied upon by third parties, except as agreed by AECOM and its client, as required by law or for use by governmental reviewing agencies. AECOM accepts no responsibility, and denies any liability, whatsoever, to any party that modifies this drawing without AECOM's express written consent. Do not scale this document. All measurements must be obtained from stated dimensions.



DRAIN CONNECTION DETAIL 1
 Scale N.T.S



DRAIN CONNECTION DETAIL 2
 Scale N.T.S



PROJECT
HARVEY TANK REPLACEMENT PROJECT

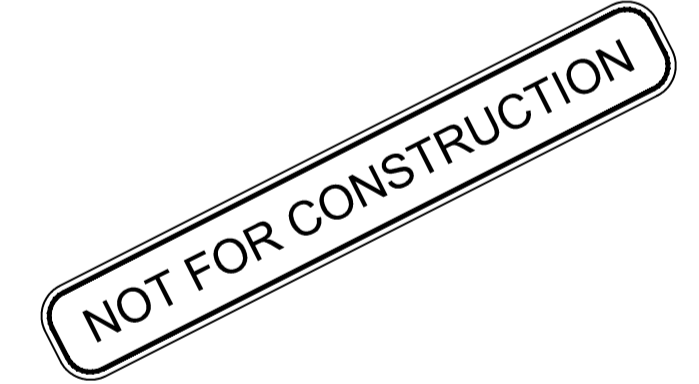
CLIENT
VILLAGE OF LIONS BAY
 Village of Lions Bay Municipal Hall
 PO Box 141 – 400 Centre Rd
 Lions Bay, BC V0N 2E0
 (604) 921-9333
 www.lionsbay.ca



CONSULTANT
 AECOM
 3292 Production Way, Floor 4
 Burnaby, BC, V5A 4R4
 604.444.6400 tel 604.294.8597 fax
 www.aecom.com

NOTICE:
 THE EXISTENCE, LOCATION AND ELEVATION OF UTILITIES AND/OR CONCEALED STRUCTURES AT THE PROJECT SITE ARE NOT GUARANTEED BY AECOM CANADA LTD.
 THE CONTRACTOR IS RESPONSIBLE FOR DETERMINING THE EXISTENCE, LOCATION AND ELEVATION OF ALL SUCH UTILITIES AND/OR STRUCTURES AND IS RESPONSIBLE FOR NOTIFYING THE APPROPRIATE COMPANY, DEPARTMENT OR PERSON(S) OF ITS INTENTION TO CARRY OUT ITS OPERATIONS.

REGISTRATION



ISSUE/REVISION

I/R	DATE	DESCRIPTION
0	09/21/2018	ISSUED FOR TENDER
1	09/27/2018	ISSUED FOR ADDENDUM 1

KEY PLAN

PROJECT NUMBER
 60546407
SHEET TITLE
 STANDARD DETAILS
SHEET NUMBER
 C-01-105

This drawing has been prepared for the use of AECOM's client and may not be used, reproduced or relied upon by third parties, except as agreed by AECOM and its client, as required by law or for use by governmental reviewing agencies. AECOM accepts no responsibility, and denies any liability, whatsoever, to any party that modifies this drawing without AECOM's express written consent. Do not scale this document. All measurements must be obtained from stated dimensions.