

Community Emergency Plan

Village of Lions Bay

Ch'ichi'iyuy Elxwikn



draft

Table of Contents

Key definitions	3
Introduction	4
Community Overview	5
Demographics	5
Land Use.....	5
Critical infrastructure	5
Response Capabilities	7
Hazard, Risk and Evacuation	8
Evacuation Routes.....	8
Interface Fire.....	9
Hazardous Materials	10
Severe Storm (All Seasons)	10
Earthquake.....	11
Community Map – Village and Trails of Lions Bay	12
Community Action Plan	13

Key definitions

Emergency	An event that requires prompt coordination of actions to protect the health, safety or welfare of people, or to limit damage to property or the environment.
Hazard	A potentially damaging physical event, phenomenon or human activity that may cause the loss of life or injury, property damage, social and economic disruption or environmental degradation.
Resilience	Resilience is the capacity to adapt; by persevering, recuperating or changing to reach and maintain an acceptable level of functioning. Disaster resilience is built through empowering organizations, communities and society to share responsibility for keeping hazards from becoming disasters.
Risk	The combination of the likelihood and the consequence of a specified hazard event happening.
Vulnerability	Physical, social, economic and environmental factors or processes, that increase the susceptibility of a community to negative impacts from hazards. It is also a measure of how well prepared and equipped a community is to minimize impacts and cope with hazards.

Community Emergency Plan

Village of Lions Bay 2025

Introduction

The Village of Lions Bay Emergency Management Program provides emergency management services to the ~1500 residents in the borders of the Incorporated Village of Lions Bay. In addition to the Emergency Management Program, provides support for

- Fire and Rescue Services
- Wildfire Fuel Management Program (FireSmart).

Major emergencies and disasters are on the increase in Canada and worldwide. Disaster effects may be direct (e.g. damage to house, loss of income) or indirect (e.g. increased insurance premiums, reduced air quality due to smoke from wildfires elsewhere).

A number of communities in the Sea-to-Sky corridor, Lions Bay being one of them, are geographically isolated from traditional first responder organizations such as fire, police and emergency medical services. Communications and other infrastructure may be limited or prone to outages. The effect of this geographical separation is that communities will likely lead their own response, making community knowledge, preparation and skill building a vital aspect of emergency preparedness and increasing the resilience of these communities to adverse events.

The purpose of a Community Risk Assessment (CRA) is to guide practical steps in preparedness, response, recovery and mitigation that reduce both the likelihood of emergencies and the consequences when disaster cannot be avoided. Risk information also informs community residents, business owners, and institution managers of the hazards to expect and how best to prepare for them. Further, A CRA provides a platform from which to advance community-level emergency management and evacuation policy and planning.

A Community Action Plan (CAP) provides a blueprint for communities to increase their resilience through increasing skills, knowledge and connectedness – benefiting the community before a major emergency, during response and through the recovery process.

Community Overview

The Village of Lions Bay is located between Horseshoe Bay and Squamish on the steep eastern shore of Howe Sound. The community is situated in a forested area between the shores of Howe Sound and Crown Land stretching up to mountains called The Lions. The village is bisected by the CN Rail Corridor and the Sea-to-Sky highway.

The community is most obviously exposed to interface fire risk due to the surrounding forest, and the proximity of both a main highway and rail corridor increases the potential for a hazardous material incident or an interface fire starting from a derailment or vehicle accident. Severe storms may result in extended utility outages. The community also has the potential to become isolated due to the effects of all three hazards. Earthquake is a further hazard, not specifically treated here, but emergency preparedness measures for the other three hazards are consistent with those required for earthquake.

Demographics

A mix of full time and seasonal residents.

Land Use

Single family homes and two townhouse complexes.

Critical infrastructure

Drinking Water	Intake from Harvey and Magnesia Creeks
Sanitary/Waste Water Treatment	Kelvin Grove within Lions Bay has an independent WWT facility. Other areas have septic tanks
Electrical Power Systems	BC Hydro supply available to all residences
Gas Heating Systems	Propane tanks
Communications	Landline, internet access and cellphone reception

draft

Response Capabilities

Structural fire	Trained Volunteer Fire Department with three vehicles. Mutual Aid Agreement with West Vancouver and Britannia Beach Fire Services.
Wildland interface fire	Crews dispatched from Coastal Fire Centre coordinated by BC Wildfire Service. Opportunity for more local training with LBVFD.
Medical	Lions Bay Volunteer Fire Department members have first aid training. Nearest BCAS base is within the central Village.
Police	Nearest RCMP detachment in Whistler and mutual aid is provided by the West Vancouver Police Department.
Evacuation	Evacuation Plan is in development.
Communication	LBVFD members trained in radio communications. Landline, cellphone, internet access available, subject to any infrastructure impacts.

Hazard, Risk and Evacuation

HAZARD PROFILE FOR THE VILLAGE OF LIONS BAY

Flood	Debris Flow/ Landslide	Interface Fire	Severe Storm/ Utility failure	Earthquake	Hazardous Material

KEY:*

HIGH RISK
MODERATE RISK
LOW RISK
UNLIKELY

*Note that risk does not equal impact. A low risk event may still occur with high impact.

Evacuation Routes

Dependent on impacts and location of threat, the evacuation route will be north or south along Highway 99 at the direction of first responders. No obvious vehicular alternatives. Potential for evacuation on foot via trails down to Highway 99 area but problematic for any evacuee with mobility issues.

The recommended evacuation route will also be printed on the official evacuation notice delivered by first responders and/or published on the Lions Bay website.

Community Muster Points, if required, will be the parking lot above Kelvin Grove Beach Park, the Cafe parking lot or school field parking lot, and the parking lot at the north bound Hwy 99 exit for Brunswick Beach. The Muster Points will be used if evacuation by bus or RCMP escort due to road conditions, or to receive additional information or supplies (e.g. bottled water) before evacuating.

Interface Fire

Lions Bay is located in a wildfire environment. Wildfires will happen – exclusion is not a choice. The variables in a wildfire scenario are:

- when the fire occurs, and
- where the fire occurs.
- the extent of the fire

In June of 2019 the Strip Creek wildfire burned above the Sea to Sky highway 4.5 kilometres south of Lions Bay. The fire reached a burn area of 3 hectares before it was contained by 50 firefighters of the BC Wildfire Service with aerial support. The cause of the fire was suspected to be from sparks from BC Hydro power lines.

Potential sources of ignition for an interface fire include a lightning or human caused forest fire, a structural fire in the community that spreads to the forest area, ignition related to a train accident or sparking, and a vehicle collision related fire on highway 99 that spreads.

The consequences of an Interface Fire event are potentially severe/catastrophic for the community of Lions Bay.

EVACUATION PROTOCOL

At the **Evacuation Alert** stage:

- Residents with mobility or chronic health issues may choose to voluntarily evacuate to ensure their safety and continuity of care. If they choose to stay at this time, they should contact the Village of Lions Bay Emergency Program staff to discuss their situation and/or make arrangements with a neighbour if they do not have a vehicle, and their primary healthcare provider if evacuation is medically complicated (e.g. dialysis, oxygen tanks).
- All other residents should make preparations to leave, ensuring that they have a plan for the safe evacuation of all people and pets, gather essential documents, medicines and necessities of food, clothing and other items.

At the **Evacuation Order or Tactical Evacuation** stage:

- At the direction of BC Wildfire Service, RCMP or other authorized first responders, residents will evacuate according to the evacuation route directions given.
- All residents must leave, ensuring that all people and pets in their household safely evacuate, and taking the previously gathered essential documents, medicines, necessities of food, clothing and other items. If these items have not been gathered in advance, there may be no time to take anything at the time of evacuation.
- Emergency Support Services (ESS) will be provided to those evacuated, including emergency accommodation if required.

Hazardous Materials

Lions Bay is located between the main arterial road through the Sea-to-Sky Corridor (Highway 99) and the main rail corridor. A variety of hazardous materials are transported by road and rail, and fuel spills are possible from both of these sources, with the consequential risk of fire.

Depending on the substance released and its location, sheltering in place may be the only viable option.

The consequences of a Hazardous Materials spill are likely to be highly variable, depending on the substance, proximity, volume, time of day and speed of notification to residents.

EVACUATION PROTOCOL:

At the direction of Vancouver Coastal Health, Ministry of Environment officials and/or first responders, residents will Shelter in Place or Evacuate depending on the hazardous substance involved. In the event of evacuation, Emergency Support Services (ESS) will be provided to those evacuated, including emergency accommodation if required.

Severe Storm (All Seasons)

Lions Bay may become temporarily isolated by a severe winter snow storm or summer storm with high winds that down trees and potentially knock out power lines nearby. Winter heating is a concern, especially for vulnerable residents. Extended power outages presents health and safety risks including food spoilage, shortage and inability to store medications requiring refrigeration (e.g. insulin). Blocked roads, including highway access, compromises community access to emergency health services.

EVACUATION PROTOCOL:

Shelter in place until downed power lines are confirmed by BC Hydro as no longer hazardous. If emergency assistance is required, call 9-1-1. If a storm related evacuation is required, follow the instructions of first responders and official information from the Village Emergency personnel. In the event of evacuation, Emergency Support Services (ESS) will be provided to those evacuated, including emergency accommodation if required.

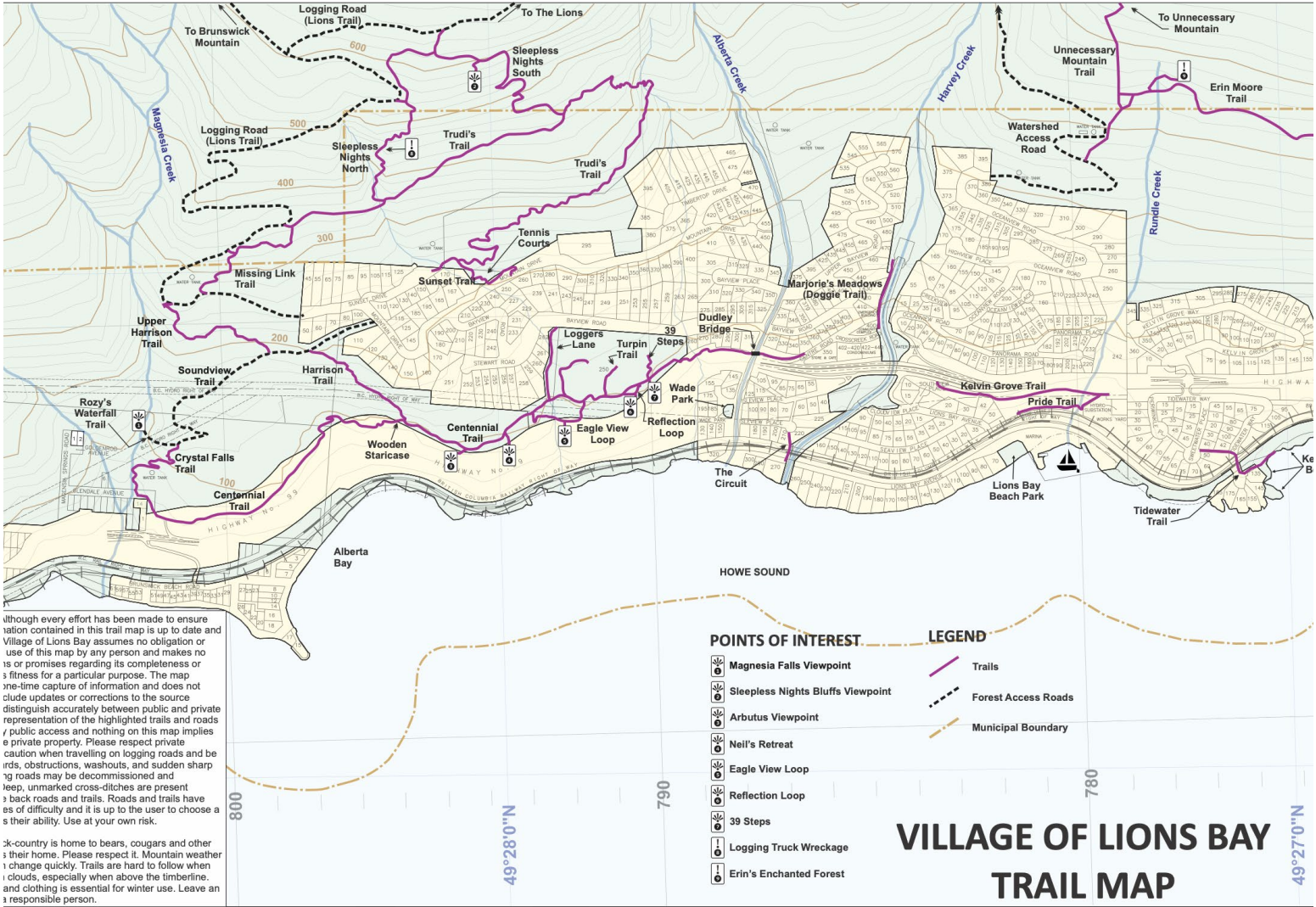
Residents who are vulnerable due to health conditions should discuss a plan in advance with their family members and primary healthcare provider. This may include voluntary self-evacuation when a severe storm event is forecast, or ensuring access to a back up power supply, and additional supplies of medication or an emergency prescription, as well as supplies of food and water.

Earthquake

Depending on epicentre, type, and severity, a full range of impacts are possible for the Village of Lions Bay. Isolation is a significant possibility if Highway 99 is blocked (likely) even if structural damage is minimal in the community. Depending on time of year, interface fire may result from an earthquake-caused electrical or gas fire, endangering the wider community. Damage to waste water treatment and drinking water systems in conjunction with extended isolation would create public health concerns. Damage to communications infrastructure in the wider area, e.g. cellphone towers, may compromise communication to external response agencies.

EVACUATION PROTOCOL:

Remain in the 'Stop/Cover/Hold' position until shaking stops. If you are able, shelter in place until downed power lines are confirmed by first responders or BC Hydro as no longer hazardous. If you feel your house is unsafe, including if you smell gas, exit the building immediately. If emergency assistance is required, call 9-1-1. If an earthquake related general evacuation is required, follow the instructions of first responders and official information from the Village Emergency Personnel. Through Rapid Damage Assessment by trained teams, individual residences may be assessed as unsafe, in which case evacuation will be required. Emergency Support Services (ESS) will be provided to those evacuated, including emergency accommodation, food and clothing if required.



Community Map – Village and Trails of Lions Bay

Community Action Plan

The SLRD will work with community representatives every three (3) years to review, assess and update the Community Action Plan.

Historical Actions

- The Village of Lions Bay has a group of trained first responders through the volunteer fire department
- The Village of Lions Bay has progressively worked to reduce their interface fire risk by trimming trees and removing woody debris from homes to FireSmart the community.
- Independent water and waste treatment system may be a protective element in the event of damaged infrastructure in neighbouring communities.
- A BC Ambulance station with 1-2 vehicles and personnel can provide advanced first aid.
- Land and Sea Search and Rescue organizations serving the Lions Bay Area.

Current and Future Potential Actions by the Community

- Establish a **Neighbourhood Emergency Team (NET)** with members from the Village, who have completed a criminal record check (free for volunteers and required in order to be placed in many volunteer roles during response). The Village can support the NET through training in basic emergency preparedness, evacuation notification, recovery considerations and other relevant topics that facilitate a two-way knowledge exchange of local government emergency processes and community capacity building. The Village can also connect community members to funding when it is available (e.g. FireSmart). NET team members would be utilized in a disaster response as qualified volunteers under the direction of the relevant agency. The size of the NET, its organization and the level of training is at the discretion of the community and is dependent on community buy in.

NET team members may be progressively trained in:

- First Aid and simple triage
 - Evacuation Processes
 - Radio Communication
 - Locating victims and resources
 - BC Wildfire S-100 Basic Fire Suppression and Safety
- Identify vulnerable residents and develop a plan with them for their continued safety in the event of a major emergency (EMBC resources available to assist planning)
 - Identify and document skilled individuals in the community (e.g. doctors, nurses, electricians, engineers) utilizing the Neighbourhood Preparedness Guide as outlined by Emergency Management BC.

- Practice evacuation notification with the delivery of emergency preparedness public information resources to each house.
- Campaign to get all residents signed up to the Alertable App emergency mass notification system for direct communication by email, text and landline from Alertable to residents and their nominated emergency contacts.

Looking for more information to make your community Disaster Resilient?

VILLAGE Site	www.lionsbay.ca
GENERAL	http://www2.gov.bc.ca/gov/content/safety/emergency-preparedness-response-recovery
ANIMALS	http://www.cdart.org/beprepared.htm
FIRE SMART	www.firesmartcanada.ca